

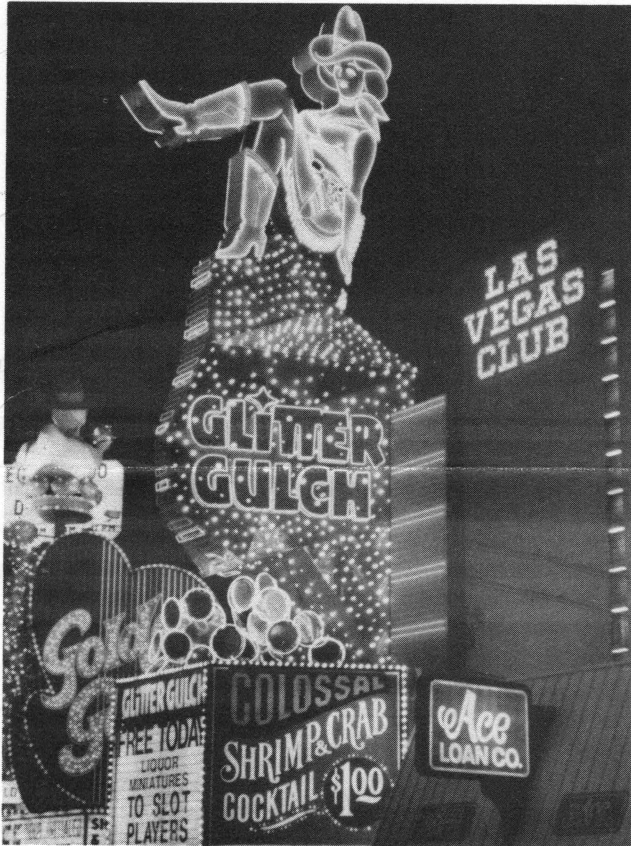
# INTERNATIONAL ASSOCIATION OF PANORAMIC PHOTOGRAPHERS

AUGUST 1986

ORLANDO, FLORIDA



## VIVA LAS VEGAS



Our Las Vegas Conference was indeed a total success. You just had to be there! We had those who do panoramic photography as a hobby, as an art form, for a living and those who build their own cameras and can talk algebra and trig like it is a common everyday language and how it all relates to optics and panoramic photography. We had it all! One thing is for sure, we have some very brilliant, mechanically minded members in IAPP. It was a couple of impromptu speakers that wowed the audience with their knowledge of panoramic photography and the mathematical equations thereof.

One man, Tom Yanul, really was busy since our Orlando Conference, building and perfecting his large format, swivel lens, panoramic camera. It was fashioned after similar designs of George 'Flashlight' Lawrence's kite cameras. The results Tom is getting from his camera of the Chicago architecture are outstanding.

Bill McBride and Dr. Roy Christian had a few very early #10 Cirkuts that were interesting to see and learn about. Bob Paluzzi set up his number 16 and explained how it works and showed a 16" x 12" color photo of Las Vegas. And then Dave Paskin completely dismantled a #10 telling what all the parts do, etc.

Karl Heitz attended with several of his employees and a factory rep from Switzerland and demonstrated the Roto 70 camera and Gitzo tripods.

We also got to see and have demonstrated the new 120 Electropan Camera by Kornelius Schorle' of the Photo Connection California.

We must once again give a huge 'THANKS' to Ed Goldbeck for taking our 3rd annual

CONTINUED ON PAGE 2

group cirkut photograph. Another well done Goldbeck job!

Our Conferences wouldn't be complete without Andrew Davidhazy and his collection of weird little panoramic cameras that perform all sorts of tricks and his instant processing. His peripheral Polaroid portraits are always a hit. Thanks A D.

Our print exhibit was very impressive, we really have some outstanding photographers in our group.

One complaint we had, the food was too good and too much of it, everyone gained weight.

Wednesday evening, a group of about 12 IAPP'ers invaded downtown Las Vegas with tripods, several Hulchers, Widelux, Fujica, a 4x5 and many 35mm cameras to photograph the strip. A lady asked if we were part of the Burt Reynolds film crew? At first we said no, as we didn't know he was a few blocks down the street filming his new movie "Heat". The next person that asked the same question, the answer was, "yes indeed we were", and Harold Lewis was pointed out as the director and we were there setting up to take some publicity shots of Burt Reynolds on horse back and he would be here in about 15 minutes. Word quickly spread and the crowd grew larger and larger including 2 police officers. Then we all up and left and went down the street to another intersection and it started all over again. Great fun!

On Thursday, five of us rented a Lincoln Continental Town Car and drove out to Red Rock Canyon. The group consisted of Fred Douglas, England; Colin Bullard, Australia; Ron Klein, Alaska; Harold Lewis, Mass; Richard Fowler, Florida. We set up Fred Douglas's newly aquired Paskin #10 Cirkut and Ron Kleins #16 Cirkut to try them both out on a nice scenic. A park ranger wanted us to leave as we looked to professional and that was not allowed without speacil government permission. He got convienced we were just having fun. But for several hours we were a tourist attraction as many amateur photographers wanted to know what the black boxes were. On the way back to Las Vegas, Fred Douglas wanted to drive that big car. Had to convince him to stay to the right - we made it.

And then we had to all say goodbye until next year. Colin Bullard, that clean cut, loveable guy from Sydney, Australia stunned a group of us when he said he was going to pick up 4 whores in Los Angles and take them back with him to Australia. (Didn't know they had a shortage.) Upon clarification of his accent, we found he was picking up 4 oars for a racing shell.

JEFF ALDRICH, HAROLD B. LEWIS, FRED DOUGLAS



DAVID PASKIN DISMANTLES A NO. 10 CIRKUT

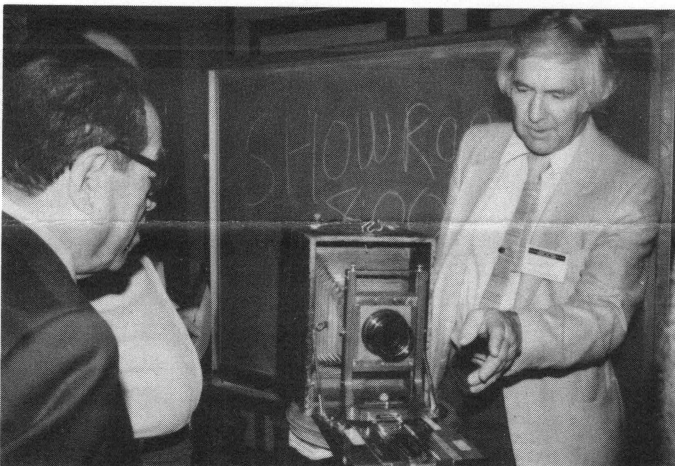
We have had some very interesting letter come in these past couple of months. Many are inquiries - what and who is IAPP? Other had some interesting stories about their panoramic techniques and uses of their cameras. Here are excerpts from a few of the letters.

Brian Beatty of Australia tells how he uses 2 Widelux cameras which he likes as they closely resemble the Cinerama widescreen format. He is looking for information regarding the projection of Widelux transparencies on a deep curved screen of 120 to 140 degrees. He is looking for an optical projection lens to match the Widelux system. He also takes stereoscopic Widelux slides which are projected on a Polaroid 3-D viewer. I have asked Brian to document his techniques for our next newsletter.



Mike Westmoreland of England sent a copy of the "Camera" magazine issue with a story of his Cirkut photography with many beautiful reproductions of his fine photography. He also has a traveling exhibit of his European color pictorials. He told me how he uses transparency film in his Cirkut cameras and prints onto Cibachrome.

#### THE HULCHERAMA CLUB



FRANCISCO CHAVEZ, A NO. 10, ROY E. CHRISTIAN

Sanford Smith from Lexington, Missouri has custom built a 4x10 camera that uses 4x10 x-ray film holders to take panoramic photos. Hopefully we will have more details about his design in our next newsletter.

Arnoldo Moran who lives in Guatemala is purchasing some Cirkut equipment to take convention groups - he needs film.

Frank Norman, PO Box 574, Yreka, CA 96097-0574 uses a Widelux F7 and has the usual problem of too much foreground in his photographs. He solved the problem by building a 12' monopod and release system for his F7. He will share his design ideas, just write him.

Purchased a book published by the University of New Mexico Press entitled

Las Vegas, New Mexico - A portrait. All photos are taken with a Widelux by Alex Traube and the text by E. A. Mares. 186 pages, all photos B&W sepia, ISBN 0-8263-0670-5 Something you Widelux users might enjoy looking at.

I heard that another E.O. Goldbeck book is about to be published, have no details at this time.

We have also signed up many more foreign members from Australia, Canada, Honk Kong and England plus many more from the USA.

Now if everyone will only respond with their stories for the next issue of our newsletter!

WE MUST SAY GOODBYE TO THOSE WHO DO NOT SEND IN THE ENCLOSED MEMBERSHIP FORM AND \$15, THE FREE RIDE IS OVER. ALSO THOSE WHO HAVEN'T PAID FOR 1986/87 ALSO NEED TO REMIT, ANYONE WITH AN ADDRESS CHANGE NEEDS TO REPLY. DO IT NOW WHILE IT IS FRESH IN MIND.

#### FROM YOUR EDITOR -

To all you kind folks from around the USA and many foreign countries that have written to me and received no reply - sorry about that. I have either been too busy running my business, took a long vacation with my family, was quite sick for several weeks plus I had to change my time priorities as I was spending entirely too much time doing IAPP work. But before you get mad at me though, keep in mind this is a pure voluntary job available to anyone out there that would like to edit the IAPP Newsletter. I need help and I need it now. We have a good thing going here and to keep it going will take someone to step in and start writing or?

And now for some good news. Had a phone call from Ron Golland of Calumet Photographic, Inc., they are considering stocking B&W and Color 8" and 10" Cirkut film. They would be a national source for our film needs. To get it started call Ron at 1-800-CALUMET and express your needs and support for the idea.

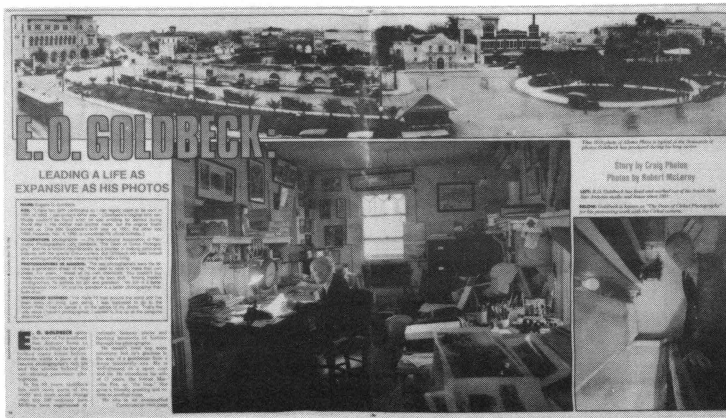
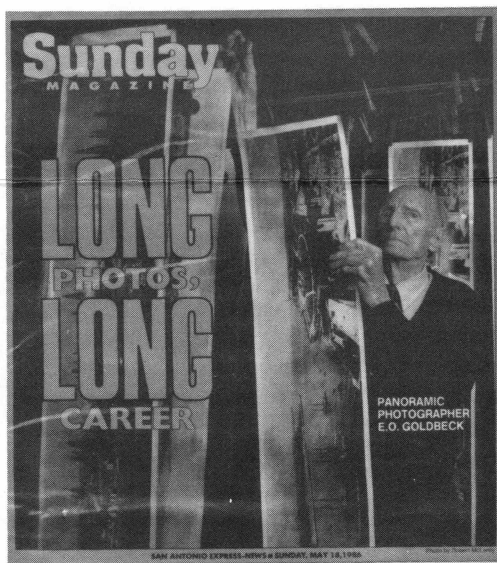
Charles Hulcher, our Hulcherama Godfather, was featured in an article in the March 1986 issue of Technical Photography magazine. It told of his company and his various custom made cameras.

The June 1986 issue of Photo Methods Magazine had an excellent article about all the various pan cameras that are now currently being manufactured along with photographs, names and addresses.

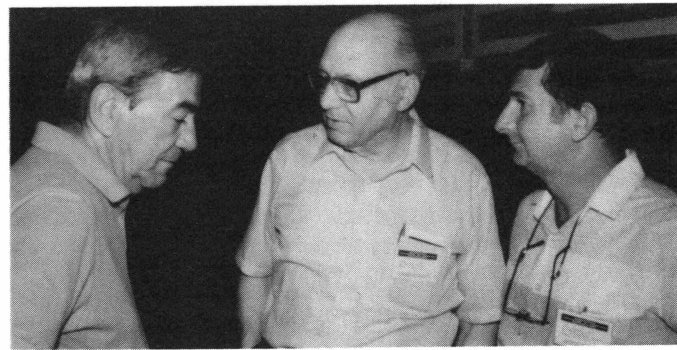
A special thanks to Donald Halway of NYC who couldn't attend our Las Vegas Conference but sent IAPP a donation check for \$100 to help keep it going.

The Eastman Kodak Company has a product information phone number 1-800-242-2424.

E.O. Goldbeck, The Dean of Cirkut Photographers, appeared on the cover of the San Antonio Express-News Sunday Magazine section plus the center fold spread, telling of his life and career as a panormaic photographer. The article is a beautiful tribute to E.O. and his family, his personal values and accomplishments.



E. O. GOLDBECK  
723 E. DREXEL AVENUE  
SAN ANTONIO, TX 78210



BOB PALUZZI, JIM LIPARI, COLIN BULLARD



SHARON STOVER HOLDS A CHARLIE STOVER PRINT

#### FOR SALE:

#8 Cirkut Outfit, complete camera, lens, focus back, gears, tripod - VG condition, \$750.00 Bill McBride, PO Box 6237 Santa Barbara, CA 93160 1-805-684-7268

#10 Cirkut Camera, complete and in VG working condition, \$2450. Also available restored #10 with electric drive, Mark Crabtree, 751 Liberty Street, Morgantown, WV 26505 1-304-598-0726

#4 Panoramic in working condition - William N. Baur, 625 B. Sutter Street, Folsom, CA 95620 1-916-985-4115

#### WANTED:

10 1/2-18-24 lens for #10 Cirkut - Richard Fowler, 1739 Limewood Lane, Orlando, FL 32818 1-305-293-8003

Leader Paper for Cirkut film, 10 3/32" wide. Anyone know a source for people who spool their own film? Jim Ivey, Central Photo Company, 317 H Street, NE, Washington, DC 1-202-544-6065

A good question - why won't Eastman Kodak supply this leader paper to those who purchase bulk rolls of Cirkut film? I think this is quite unfair of them not to make it available. WHY EK Co.?

For those that need gears cut, lenses optically measured, Cirkut Camera repairs contact Jim Lipari, 901 South 69th Street, Omaha, NE 68106 1-402-558-7665.

## EVOLUTION OF THE #10 CIRKUT CAMERA

The #10 Cirkut Camera, manufactured from 1904 to 1941, was the most widely used, large format American panoramic camera ever made, with many still in use today. The author has assigned his own model numbers to the different No. 10 Cirkut Cameras manufactured so that the chronological order will be clearer in this article (see table 1).

The following account is probably how the Cirkut Camera obtained it's name. In the early days a photographer made a circuit of an area to take photographs of military troop tents and troop maneuvers. The circuit here refers to a travelling around a periphery of tents. Since the Cirkut panoramic camera did a better job of covering the periphery of the tents than the conventional view camera, it was given the name 'Cirkut' by the inventors Johnston, Reavill and Brehm. The camera could not be named 'circuit', which was already a registered name, so they used 'Cirkut' for their panoramic camera.

portion of the film being exposed is, in effect, stationary. The camera is capable of taking pictures of different horizontal angles of view, including 360 degree single exposure twelve and a half feet long. The camera film drum could hold up to twenty feet of roll film. The overall length of the negative is determined by the focal length of the lens and the horizontal angle of view desired. The scale on the tripod head will give the degrees and number of inches of film required. By using the longest focal length of the lens, the longest negative is obtained and, at the same time, the largest image of the subject. The camera was utilized to photograph hotels, railroads, views of real estate projects, manufacturing plants, entire cities and towns and most of all groups of people (mostly military).

The Cirkut type panoramic camera design was first patented November 29, 1904 (776,403) by William J. Johnson of Rock Springs, Wyoming. On January 17, 1905 Johnson also obtained a camera revolving

TABLE 1, NO. 10 CIRKUT CAMERA CHRONOLOGICAL ORDER.

MODEL NO.	MANUFACTURER	YEARS OF PRODUCTION	SPEED CONTROL	REMARKS
1	ROCHESTER PANORAMIC CAMERA CO.	1904 TO 1905	FAN	THE FIRST NO. 10 CIRKUT MADE AND THE ONE THAT HAD THE MOST FEATURES.
2	CENTURY CAMERA COMPANY	1905 TO 1907	FAN	SIMILIAR TO MODEL 1 MINUS SEVERAL FEATURES PLUS 2 FILM PRESSURE PLATES.
3	CENTURY CAMERA DIVISION EK CO.	1907 TO 1915	FAN	NEW CAMERA LENS FRAME AND NEW TRIPOD HEAD DESIGN.
4	CENTURY CAMERA DIVISION EK CO.	1907 TO 1915	FAN	SAME AS MODEL 3, BUT WITH IMPROVED MOTOR START LEVER MECHANISM.
5	CENTURY CAMERA DIVISION EK CO.	1907 TO 1915	GOVERNOR	THE FIRST GOVERNOR TYPE CIRKUT NO. 10 A COMPLETELY NEW CAMERA.
5-A	FOLMER AND SCHWING DIV. EK CO.	1915 TO 1917	GOVERNOR	SAME AS MODEL 5 EXCEPT FOR NAMEPLATE.
5-B	FOLMER AND SCHWING DEPT EK CO	1917 TO 1926	GOVERNOR	SAME AS MODEL 5 EXCEPT FOR NAMEPLATE
5-C	FOLMER GRAFLEX CORPORATION	1926 TO 1932	GOVERNOR	SAME AS MODEL 5 EXCEPT FOR NAMEPLATE
6	FOLMER GRAFLEX CORPORATION	1932 TO 1941	GOVERNOR	SAME AS MODEL 5 EXCEPT FOR NAMEPLATE AND NEW LENS 10-15 1/2-20

The early No. 10 Cirkut cameras used air resistance fans to control the camera speed of rotation while the later Cirkut cameras employed a varible speed internal governor for camera speed control. The Cirkut camera is built with an internal clockwork motor that pulls the roll film past the vertical exposure slot counter-clockwise at a pre-selected speed, and at the same time, rotated the camera in the opposite direction (clockwise) on the geared tripod head at the same relative speed the roll film is moving past the exposure slot. Thus, that

appartus patent (780,351) to improve the first design by simplifying the gear train to make the camera work smoother. David A. Reavill of Rock Springs, Wyoming and Rochester, New York was granted two patents on January 17, 1905 (780,381 & 780,382) for a panoramic design on which he assigned them to the Rochester Panoramic Camera Company of Rochester, New York a corporation of Wyoming. During this time William J. Johnson also assigned his camera patent designs to the Rochester Panoramic Camera Company. The Cirkut type camera designs as patented by Johnston and



Reavill were not commercially produced.

The first commercially produced No. 10 Cirkut Camera (Model 1) by the Rochester Panoramic Camera Company (Figure 1), was a camera designed by Frederick Brehm of Rochester, New York, patented on January 17, 1905 (780,406). The camera was constructed with prime mahogany wood with the exterior covered with high quality leather, and the interior wood varnished beautiful natural. The exposed metal hardware parts were brightly nickel plated, and the camera had a high quality red leather bellows twenty seven inches long. The lens board for this model Cirkut is 3 3/4" square. The lens could be tilted up or down, and/or raised up or down with an adjustable screw on top of the front standard. The camera had three rollers on the bottom of the camera (Figure 2) for rotation on the tripod brass ring gear when taking a panoramic picture.

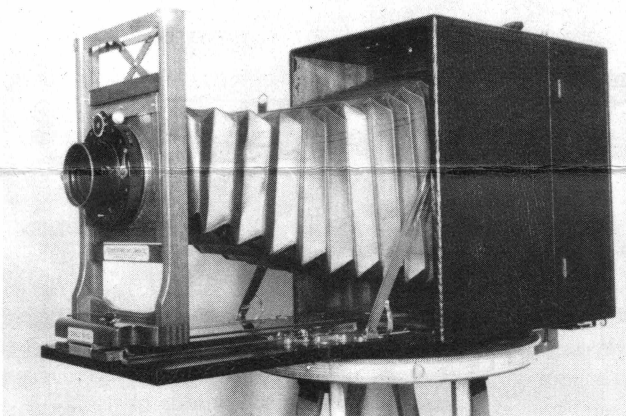


FIGURE 1

The Rochester camera was the only No. 10 Cirkut built that you could drop the front camera bed keeping it out of the picture when using short focal length lenses. It was also the only camera that had an adjustable exposure slot of 1/8", 1/4" or 1/2" (Figure 3). The camera used different size air resistance fans to control the rotation speed when making an exposure. The 5 fans that came with the camera consisted of 1/3, 1/6, 1/10, 1/25 and 1/30 of a second exposure using the 1/4" slot. If the 1/8" slot is utilized, the exposure time will be half that of the particular fan selected. If the 1/2" slot is used, the exposure time will be double that of the particular fan selected.

To focus the No. 10 Cirkut Camera, the film box is removed and the ground glass focusing back is released by pressing the two concealed buttons on each side of the

camera, then draw it out as far as it will come, it will lock in it's extended position (Figure 4).

All No. 10 Cirkuts had a film movement scale in inches and degrees mounted on the tripod head which gave the distance the film moved in inches on an exposure. On this model and other fan models, the exposure slot automatically opens when the camera film box is locked on the camera. The camera clockwork mechanism on the fan type cameras is started and stopped with a hand operated air pressure bulb after the motor spring was wound up. The film spool holder on this camera is adjustable from 2 1/4" to 10" roll film. Because of the smaller upper film spool sprocket as compared with the later No. 10 Cirkut Cameras larger sprocket, a standard 120 roll film can be used in this model. This is the only No. 10 Cirkut Camera built that could use 120 roll film without using an adapter.

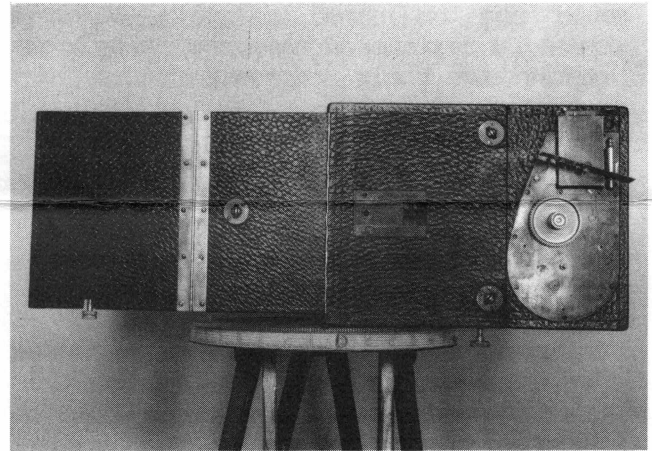


FIGURE 2

The lens furnished with this Cirkut originally was a 11" or 22" focal length doublet convertible lens manufactured by the Gundlach Optical Company of Rochester, New York. Later on the Turner-Reich 10 7/8"-18"-24" triple convertible lens manufactured by the Gundlach-Manhattan Optical Company of Rochester, New York was made available for the No. 10 Cirkut which became the standard lens for the (Model 1) and (Model 2) Cameras. For each of the 3 focal lengths, there were three pinion gears provided for 25', 50' and 100' focus distance. Some No. 10 Cirkut Cameras were modified so that the folding front on the camera could be dropped to keep the front portion of the bed out of the picture when using a short focal length lens (Figure 5). This No. 10 Cirkut Camera (Model 1) was manufactured from 1904 to 1905 and came with two carrying cases, one for the camera on one for the tripod and gears.



FIGURE 3

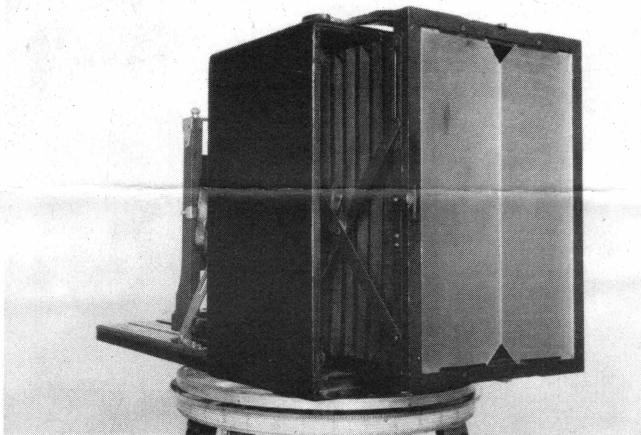


FIGURE 4

On July 23, 1903, the stock of the Century Camera Company of Rochester, New York, was purchased by the Eastman Kodak Company of Rochester, New York. Even though Eastman Kodak owned Century Camera it was operated as a separate company producing Century Cameras which included the No. 10 Century Cirkut Panoramic Camera (Model 2). On July 15, 1905, the Rochester Panoramic Camera Company entered into an agreement with the Century Camera Company for the sale to the latter of: "Goodwill, Trademarks, Trade-names and Personal Property". The No. 10 Cirkut Camera was manufactured by the Century Camera Company at first on a royalty basis and later on by right of purchase of the patents. This camera was produced the same as the Rochester Panoramic Camera Company Cirkut (Model 1) except the exposing slot was fixed at 1/4" with no adjustments. A (Model 2) camera was observed that had a

nickel plated cover plate over the hole for the exposure slot adjustment knob. The Century Camera Company may have planned to install an adjustable slot but decided to use the fixed 1/4" instead. On the Century No. 10 Cirkut Camera (Model 2), a 4 3/16" film pressure plate for the film spool spool and a full length film pressure plate over the exposure slot were added. The film winding drum was also lengthened to 10", as compared to 9 3/8" on the (Model 1), to provide a more solid base for the film to wind on. The roll film in this camera and future fan type cameras could use 6", 8" and 10" film. The Century Camera Company No. 10 Cirkut Camera (Model 2) was manufactured from 1905 to 1907.

In 1905, the Eastman Kodak Company purchased the Folmer and Schwing Manufacturing Company. In August 1905, the machinery, fixtures, merchandise, etc. were shipped to Rochester, New York and installed in the Century Camera Company plant. Even though Eastman Kodak owned Folmer & Schwing and Century Camera, they both operated as separate companies producing Folmer & Schwing and Century Camera Company products. On January 2, 1906 Folmer & Schwing Manufacturing became the Folmer & Schwing Company. The Century Camera Company maintained separate business records for both companies.

On May 22, 1907 the Century Camera Company was merged with the Eastman Kodak Company and then dissolved and on July 1, 1907 it became the Century Camera Division of the Eastman Kodak Company. Also on July 1,

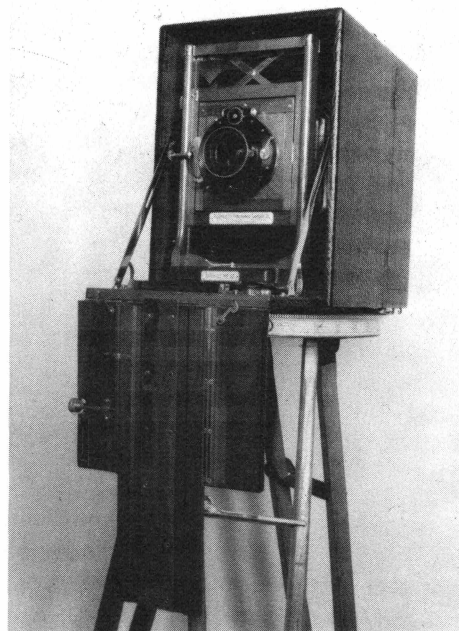


FIGURE 5

1907 the Folmer & Schwing Company was dissolved and became the Folmer & Schwing Division of the Eastman Kodak Company. These two Eastman Kodak Divisions were managed by William F. Folmer.

The Century Camera Division made design changes to improve the No. 10 Cirkut Camera and this Division produced three different No. 10 cameras. There were two additional camera patents by Harvey W. Locke, Rochester, New York, used for the Century Camera Division No. 10 Cirkut Cameras besides the patents of November 29, 1904 and January 17, 1905 previously mentioned. One camera patent was #708,721, September 9, 1902 and the other was patent #720,040, February 10, 1903 - both assigned to the Century Camera Division. The Locke patents were for camera body design rather than the Cirkut mechanism as covered by the previous patents. The first No. 10 Cirkut Camera produced by the Century Camera Division was (Model 3). The camera wood lens frame was revised (Figure 6) like the lens board tilt movement on the Rochester (Model 1) and Century (Model 2) cameras and was replaced with a right or left front adjustment. The up and down vertical movement of the lens was retained, and the lens board size changed to 3 1/2" square. The brass motor base plate was made rectangular shaped (4 1/4" x 7 1/4") from the previous Rochester Panoramic Camera Company oval shaped one. The construction of this camera had the usual bright red bellows, natural varnished red mahogany wood interior, nickel plated metal hardware and high quality leather covering on the exterior.

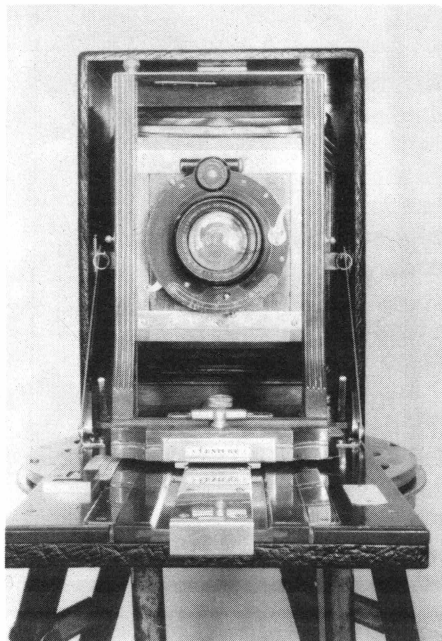


FIGURE 6

The tripod head arrangement was modified so that the rotation movement of the camera on the tripod was one assembly. The rollers on the bottom of the previous Rochester (Model 1) and Century (Model 2) cameras were eliminated. The new tripod head was a cast aluminum frame with an aluminum disk plate on top with 6 built in rollers. The camera was mounted on top of the disk plate when taking a picture. This tripod head design became the standard for all future Cirkut Cameras.

The triple convertible Turner -Reich lens focal lengths were changed to 10 1/2"-18"-24" which became the standard lens for future No. 10 Cirkut Cameras produced up to 1932.

The Century Camera Division manufactured another No. 10 Cirkut model (Model 4) like the one just described that had a redesigned camera start-stop mechanism. The mechanism was simplified but still used an air bulb to operate the camera with the desired speed control fan.

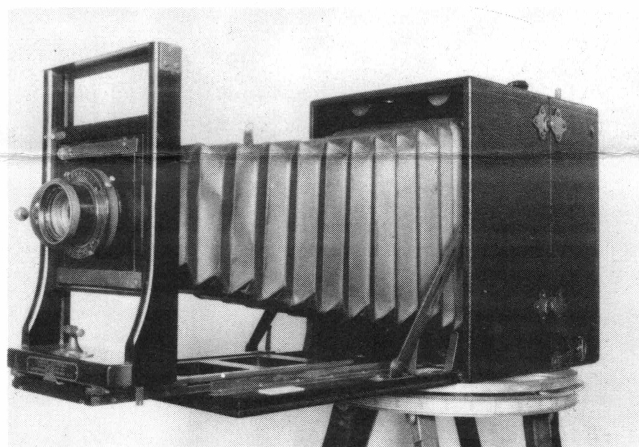


FIGURE 7 - THE FIRST GOVERNOR TYPE NO. 10 CIRKUT CAMERA, (MODEL 5), MADE BY THE CENTURY CAMERA DIVISION OF THE EASTMAN KODAK COMPANY SET FOR 24" FOCUS.

The Century Camera Division manufactured the first governor speed control type No. 10 Cirkut Camera (Model 5) which was a completely new camera (Figure 7). The camera was believed to have been developed by William F. Folmer about 1909, since the No. 5 Cirkut Camera with a similar governor speed control was patent by him in 1918. The camera was all black in color with black leather, wood painted black, black bellows and black finished hardware. The earlier camera speed control fans were discontinued and a variable speed internal governor was added to the camera clockwork. The new camera speeds were 1/12, 1/10, 1/9, 1/8, 1/4 and 1/2 of a second. A lever (Figure 8) on



the side of the camera film box, is rotated to start and stop the camera and at the same time it opened and closed the fixed 1/4" exposure slot. With the film spool adjustable bracket, 6", 8" and 10" wide film can be used in the camera. The camera lens board size was increased to 4" square with full adjustments. Because of the governor being added to the camera, the brass motor base plate was enlarged to 4 1/4" x 9" in size to accommodate the governor assembly. The tripod head design and triple convertible lens remained the same as the previously described No. 10 camera.

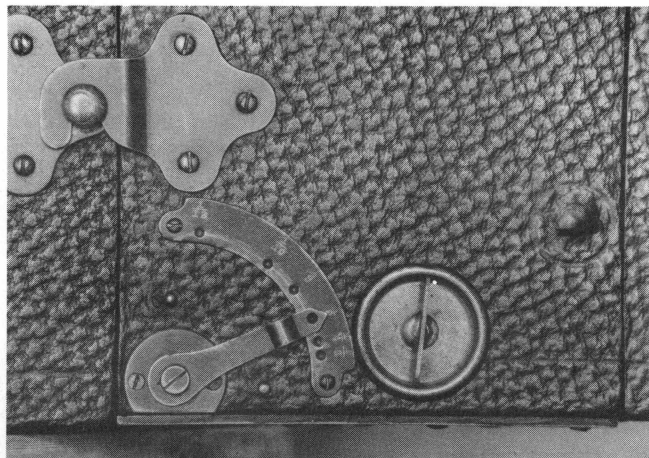


FIGURE 8 - OBSERVE THE START-STOP LEVER ON THE GOVERNOR TYPE NO. 10 CIRKUT AND THE 1/12 TO 1/2 A SECOND SPEED LEVER.

The tripod for (Model 5) came with the three sectioned Eastman Professional Tripod legs, and also the tripod head could be used with the 12' Century tripod legs to obtain higher camera elevation if desired or needed by the photographer. This camera could also be used on the No. 8 Cirkut Outfit tripod which had the four sectioned Crown No. 4 tripod legs and is a little bit taller than the No. 10 Cirkut tripod. The Century Camera Division manufactured the governor type No. 10 Cirkut Cameras until 1915 and were priced at \$290.00.

From 1915 to 1917, the Folmer & Schwing Division of the Eastman Kodak Company built the same governor type No. 10 Cameras (Model 5-A) as the Century Camera Division produced except for the new nameplate and the price of \$300.00. In 1917, the No. 10 Cirkut governor type cameras (Model 5-B) were manufactured by the Folmer & Schwing Department of the Eastman Kodak Company after that department was created in 1917 and production continued until 1926. These No. 10 Cirkuts were the same as those built by the Folmer & Schwing Division

except for the new nameplate. The 1920 Graflex catalog had the No. 10 Cirkut (Model 5-B) listed for \$385.85 and 10" x 6" film listed for \$2.90 per roll.

The Century Camera Division, Folmer & Schwing Division and Department, published a booklet "The Cirkut Method" which described the different model Cirkut Cameras available and had some typical Cirkut photographs displayed in the booklet. Also available from the Folmer & Schwing Department, was a booklet titled "Profitable Pictures With A Cirkut".

In 1926, Century Camera, Folmer & Schwing and the Rochester Optical Divisions were sold by the Eastman Kodak Company and became the Folmer Graflex Corporation of Rochester, New York. Folmer Graflex manufactured the same black model governor type No. 10 Cirkut Camera (Model 5-C) as produced by the Folmer & Schwing Department of Eastman Kodak except for the new nameplate. In 1927, the Graflex catalog listed the No. 10 Cirkut Camera at \$405.00. One Folmer Graflex No. 10 Cirkut Camera (Figure 9) was observed to have the Turner-Reich Anastigmat f6.8 Series II triple convertible lens made by the Seebold Invisible Camera Corporation of Rochester, New York instead of the usual Gundlach-Manhattan lens.

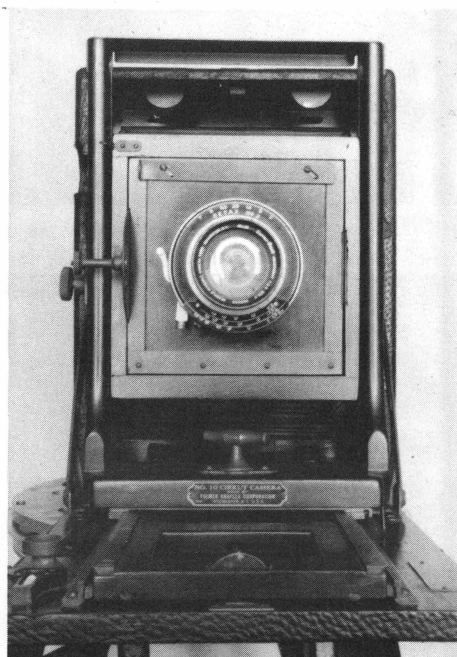


FIGURE 9 - THE FRONT VIEW OF THE FOLMER GRAFLEX NO. 10 CIRKUT CAMERA WITH THE TRIPLE CONVERTIBLE TURNER-REICH LENS MADE BY SEEBOLD INVISIBLE CAMERA CORP.

In 1932, The Folmer Graflex No. 10 Cirkut Camera (Model 6) was provided with a new f6.8 anastigmat lens with 10", 15 1/2" and

20" focal lengths which became the standard lens for the future production of the No. 10 Cameras. The configuration of (Model 6) was the same as (Model 5-C) except for the new lens. The 1936 Folmer Graflex No. 10 Cirkut Camera cost \$429.50 and came with the usual two carrying cases, one for the camera and the other for the tripod and gears. Folmer Graflex manufactured the last Cirkut Cameras in 1941. In 1945 Folmer Graflex became

Graflex, Inc. which handled the sales of the remaining No. 10 Cirkut Cameras in the company's inventory until 1949.

This article is based on the best information and material available. The author would appreciate any additional information and/or comments on this article. Bill McBride, PO Box 6237, Santa Barbara, CA 93160 (805) 684-7268

#### LATE WORD AS WE GO TO PRESS:

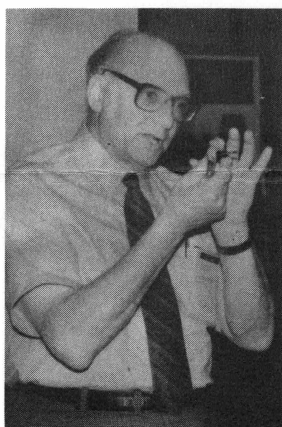
Central Photo Co., 317 H Street NE, Washington, DC 20002, 1-202-544-6065, called an informed me they have a fresh supply of 10" Kodak film they will share with IAPP members.

Vericrome Pan 10"x100' \$195 or \$2 per ft.\*  
VPS III 10"x100' \$420 or \$4.50 per ft.\*  
SO 200 (400) 10"x100' \$610 or \$6.25 per ft.\*  
\*on your spools and leader paper.  
Orders under \$100, \$7.50, over free UPS  
B&W processing printing, call for details.

We heard that Jeff Aldrich is considering inviting the IAPP group to meet in Hampton, VA sometime this October or November. No further details available at this time.

Our next IAPP Conference is suppose to be in the Chicago area in the Spring of 87. No report as yet from the committee.

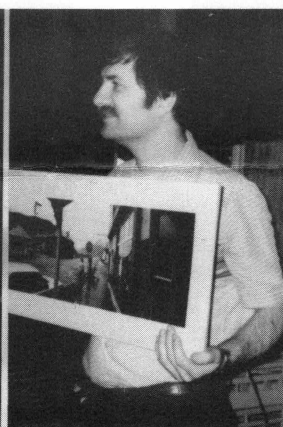
This IAPP Newsletter needs ideas from creative minds, stories about your experiences, inventions, new products, your techniques of yesteryear - send it in.



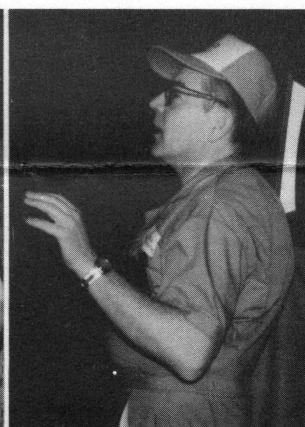
JIM LIPARI



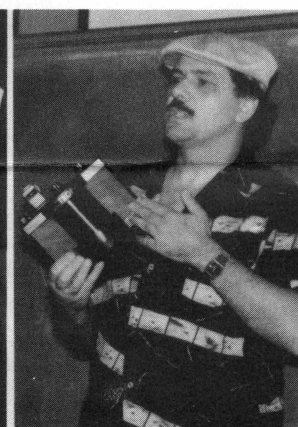
STEPHEN LOFTUS



RON KLEIN



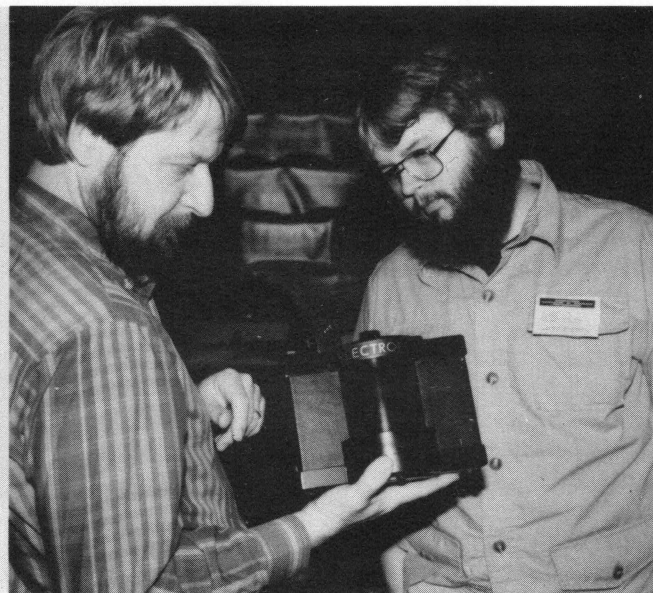
CHARLES STOVER



KORNELIUS SCHORLE



TOM YANUL - YANULRAMA



THE NEW ELTROPAN CAMERA



INSPECTING AN OLD NO. 10

# 1986 IAPP LAS VEGAS CONFERENCE

LAST NAME	FIRST NAME	COMPANY	ADDRESS	CITY	ST	ZIP	PHONE
ALDRICH - CM	JEFFERY S.	IMAGES	32 E QUEENS WAY	HAMPTON	VA	23669	804 723-7677
ALLARDICE - CM	THOMAS B.	ALLARDICE ASSOC.	257 NOTTINGHAM ROAD	WILLIAMSBURG	VA	23185	804 878-5777
ANSORGE	BARB	BUNTROCK-SALIE STUDIO	615 1/2 LAKE AVENUE, BOX 696	STORM LAKE	IA	50588	712 732-2403
ANSORGE - CM	BOB	BUNTROCK-SALIE STUDIO	615 1/2 LAKE AVENUE, BOX 696	STORM LAKE	IA	50588	712 732-1710
BLEICH - CM	THOMAS D.	BLEICH ILLUSTRATIONS	PO BOX 43222	AUSTIN	TX	78745	512 442-3358
BULLARD - CM	COLIN	THE MELBA STUDIOS	445 VICTORIA ROAD, BLADESVILLE	SYDNEY N.S.W.	2111		(02)816-4277
BUSH - CM	DAVE	DAVE BUSH PHOTOGRAPHY	2 SAINT GEORGE ALLEY	SAN FRANCISCO	CA	94108	415 981-2874
CARNES, JR. - CM	JOHN P.		3739 CENTRAL AVENUE	NASHVILLE	TN	37205	615 383-1693
CHALFAN - CM	RICHARD	PANORAMICS VISTAS	5615 140th PLACE, S.E.	BELLEVUE	WA	98006	206 747-9768
CHAVEZ	HUMBERTO	FOTOPANORAMICS	751 LIBERTY STREET	MEXICO CITY			5170921
CHAVEZ - CM	FRANCISCO	FOTOPANORAMICS	MISTERIOS 300	MEXICO CITY			5170921
CHRISTIAN	JAN	HISTORIC PHOTOGRAPHS	1691 WILSHIRE DRIVE	APTOS	CA	95003	408 688-3342
CHRISTIAN - CM	ROY E.	HISTORIC PHOTOGRAPHS	1691 WILSHIRE DRIVE	APTOS	CA	95003	408 688-3342
CRABTREE - CM	MARK	CRABTREE PHOTOGRAPHIC	751 LIBERTY STREET	MORGANTOWN	WV	26505	304 598-0726
DAVIDHAZY - CM	ANDREW	R.I.T.	ONE LOMB MEMORIAL DRIVE	ROCHESTER	NY	14623	716 475-2592
DAVIS	MARY R.	DORÉ STUDIOS INC.	820 RAYMOND STREET	MIAMI BEACH	FL	33141	305 866-1457
DAVIS - CM	JACK E.	DORÉ STUDIOS INC.	820 RAYMOND STREET	MIAMI BEACH	FL	33141	305 866-1457
DECKER	EVELYN		509 LEHMAN BUILDING	PEORIA	IL	61602	309 673-9268
DECKER, MD - CM	SAM		509 LEHMAN BUILDING	PEORIA	IL	61602	309 673-9268
DINTENFASS - CM	DAVID		1318 MILL CREEK BLVD, #R-204	MILL CREEK	WA	98012	206 335-2000
DOUGLAS - CM	FREDERICK H.	GILLMAN & SOAME	THE STUDIOS, MILL STREET, OSNEY	OXFORD			0865-245354
FAUST - CM	CHRIS	UNIVERSITY OF MINN	1621 PORTLAND AVENUE	ST. PAUL	MN	55104	612 373-5411
FICHT - CM	BILL		2441 BLUE SPRUCE LANE	AURORA	IL	60505	312 851-2185
FOWLER - CM	RICHARD G.	CIRKUT-PANORAMICS	1739 LINEMOOD LANE	ORLANDO	FL	32818	305 293-8003
GOLDBECK	SALLY	GOLDBECK COMPANY	4407 CENTER GATE	SAN ANTONIO	TX	78217	512 656-0832
GOLDBECK, JR. - CM	ED	GOLDBECK COMPANY	4407 CENTER GATE	SAN ANTONIO	TX	78217	512 656-1445
GREENING	MARIE		2711 OCTAVIA #301	SAN FRANCISCO	CA	94123	415 921-1180
GREENING - CM	AL		2711 OCTAVIA #301	SAN FRANCISCO	CA	94123	415 882-2449
HEITZ - CM	KARL	KARL HEITZ INC.	PO BOX 427	WOODSIDE	NY	10022	718 565-0004
HONEYCUTT - CM	JAKE	PHOTOGRAPHICS GRANDE	PO BOX 680	LOS ALAMOS	NM	87544	505 662-4910
JOHNSON	CHRIS	C/O WRIGHT RUNSTAD CO	1111 3rd AVENUE, SUITE 3200	SEATTLE	WA	98101	206 447-9000
JORSTAD - CM	STAN	PHOTOMARK	323 VILLAGE DRIVE	CAROL STREAM	IL	60188	312 690-9222
KALIN - CM	EDWARD B.		67 SOUTH OLMSTEAD LANE	RIDGEFIELD	CT	06877	203 431-9178
KLEIN - CM	RONALD	NORTHLIGHT	BOX 1587	JUNEAU	AK	99802	907 780-6248
LANG - CM	BOB		100 COOPER COURT	PORT JEFFERSON	NY	11777	516 928-1541
LARSEN - CM	DAVID	PHOTOS BY LARSEN	4509 SABELLE	FORT WORTH	TX	76117	817 838-5382
LAWLER - CM	BRIAN P.	TINTYPE GRAPHIC ARTS	2226 BEEBEE STREET	SAN LUIS OBISPO	CA	93401	805 544-9789
LERSCH - CM	JOHN W.		909 GREENLEAF AVENUE	WILMETTE	IL	60091	312 251-9433
LEWIS - CM	HAROLD B.	PANORAMIC INT.	PO BOX 63	WEST NEWTON	MA	02165	617 969-0879
LIPARI - CM	JAMES		901 SOUTH 69 STREET	OMAHA	NE	68106	402 558-7665
LOFTUS	VIRGINIA	AMERICAN PANORAMICS	28 LINDEN STREET	ALLSTON	MA	02134	617 782-8621
LOFTUS - CM	STEPHEN	AMERICAN PANORAMICS	28 LINDEN STREET	ALLSTON	MA	02134	617 782-8621
McBRIDE - CM	BILL		PO BOX 6237	SANTA BARBARA	CA	93160	805 684-7268
NELSON	SHELLY		1621 PORTLAND AVENUE	ST. PAUL	MN	55104	612 645-7006
ORBOCK - CM	JEFFERY	VILLAGE GALLERY	1924 EDGEWOOD ROAD	BALTIMORE	MD	21234	301 661-1648
ORBOCK - CM	DAVID	VILLAGE GALLERY	1924 EDGEWOOD ROAD	BALTIMORE	MD	21234	301 661-1648
PALUZZI - CM	ROBERT	PANORAMICS INC	2220 SANTA YNEZ	LAS VEGAS	NV	89104	702 735-1373
PASKIN - CM	DAVID	EPC COMPANY	11304 TAFFRAIL COURT	RESTON	VA	22091	703 476-5322
PAULSON - CM	AL	WIDOWORLD	1349 CHENA RIDGE ROAD	FAIRBANKS	AK	99709	907 474-6116
SCHIFF - CM	THOMAS R.	IMAGES GALLERY	286 POAGE FARM ROAD	CINCINNATI	OH	45215	513 870-2501
SCHORLE*	JANET R.	PHOTO CONNECTION	25911 WHITE ALDER LANE	LAGUNA HILLS	CA	92653	714 859-6770
SCHORLE* - CM	KORNELIUS	PHOTO CONNECTION	25911 WHITE ALDER LANE	LAGUNA HILLS	CA	92653	714 581-0069
SCHURZ - CM	KARL B.	KARL B. SCHURZ CO.	9439 SANTA MONICA BLVD	BEVERLY HILLS	CA	90210	213 275-0146
SEGAL - CM	MARK	MARK SEGAL PANORAMICS	230 N. MICHIGAN AVENUE	CHICAGO	IL	60601	312 236-8545
SEGAL - CM	ED	CAPITAL PHOTO SERVICE	6925 WILLOW STREET, NW	WASHINGTON	DC	20012	202 829-6200
SHARPE - CM	JOHN	SHARPE PHOTOGRAPHY	235 S. UNIVERSITY AVENUE	PROVO	UT	84601	801 375-9006
SKELLY - CM	GEORGE	ENDE PRODUCTS	1850 AVENIDA ESTUDIANTE	RANCHO PALOS VERDES	CA	90732	213 514-3633
STOVER	SHARON	STOVER PHOTOGRAPHY	1305 SUNSET DRIVE	NORWALK	IA	50211	515 981-4442
STOVER - CM	CHARLES	STOVER PHOTOGRAPHY	1305 SUNSET DRIVE	NORWALK	IA	50211	515 981-4217
WAHLBERG	JEANNE D.	PANORAMIC PHOTOGRAPHY	7315 LAKE SHORE DRIVE	CEDAR LAKE	IN	46303	219 374-6883
WAHLBERG - CM	TED	PANORAMIC PHOTOGRAPHY	7315 LAKE SHORE DRIVE	CEDAR LAKE	IN	46303	219 374-5454
WALTER	POLLY	WIDOWORLD	1349 CHENA RIDGE ROAD	FAIRBANKS	AK	99709	907 479-4974
WEAVER	POLLY S.	WEAVER AGENCY	BOX 887	SOUTH WEST HARBOR	ME	04679	207 244-5656
WEAVER - CM	MILES W.	WEAVER AGENCY	BOX 887	SOUTH WEST HARBOR	ME	04679	207 244-5656
WRIGHT	MARGE	HARLAN'S PANORAMICS	RT2 BOX 565	CHICO	CA	95928	916 891-8488
WRIGHT - CM	HARLAN	HARLAN'S PANORAMICS	RT2 BOX 565	CHICO	CA	95928	916 891-8488
WYATT - CM	LARRY		2518 WEST 154th STREET	GARDENA	CA	90249	213 329-3428
YAKE - CM	JEAN	PHOTOGRAPHIC SERVICES	7865 PROCYON AVENUE	LAS VEGAS	NV	89118	702 361-5885
YAKE - CM	FRED	PHOTOGRAPHIC SERVICES	7865 PROCYON AVENUE	LAS VEGAS	NV	89118	702 361-5885
YANUL - CM	TOM	BIG SHOT PHOTO CO.	2217 HARRISON STREET	EVANSTON	IL	60201	312 864-1601

SEC/TRESURER

Richard G. Fowler  
1739 Linewood Lane  
Orlando, FL 32818

1-305-293-8003

VICE-PRESIDENT

Stephen Loftus  
28 Linden Street  
Allston, MA 02134

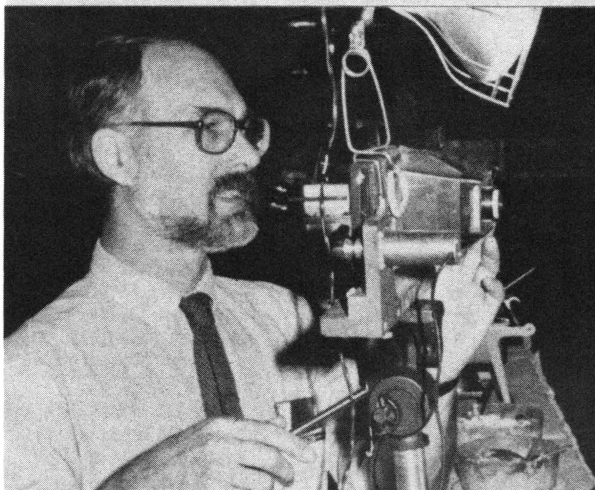
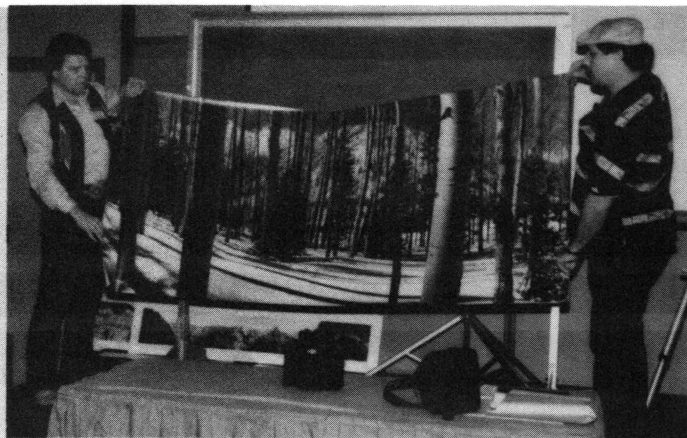
1-617-782-8621

PRESIDENT

Harold Lewis  
PO Box 63  
West Newton, MA 02165

1-617-969-0879

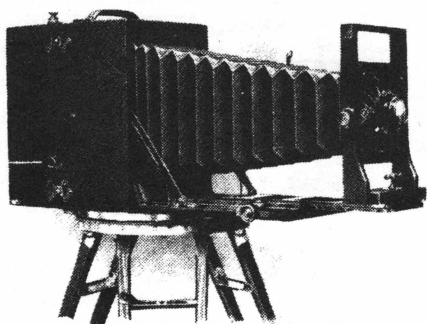




ANDREW DAVIDHAZY CREATES ANOTHER OF HIS PERIPHERAL POLAROID PORTRAITS OF SALLY GOLDBECK

**INTERNATIONAL  
ASSOCIATION OF PANORAMIC  
PHOTOGRAPHERS**

Richard G. Fowler  
1739 Limewood Lane  
Orlando, FL 32818 USA  
305 293-8003



**FIRST CLASS MAIL**